

LUXORJET

1. White colour as a background on the whole surface of the glass trophy
2. White colour as a background under the colour pixels
3. Slightly transparent colour print (without a white colour)

Tips when preparing the artwork by yourself

LUXORJET

If the coloured background has to reach the edge of the glass, extend it beyond the outline of the glass 8 mm on each side

minimum resolution for illustrations or photos 300 dpi

external outline of the glass - TEMPLATE please do not change the color and thickness of the line

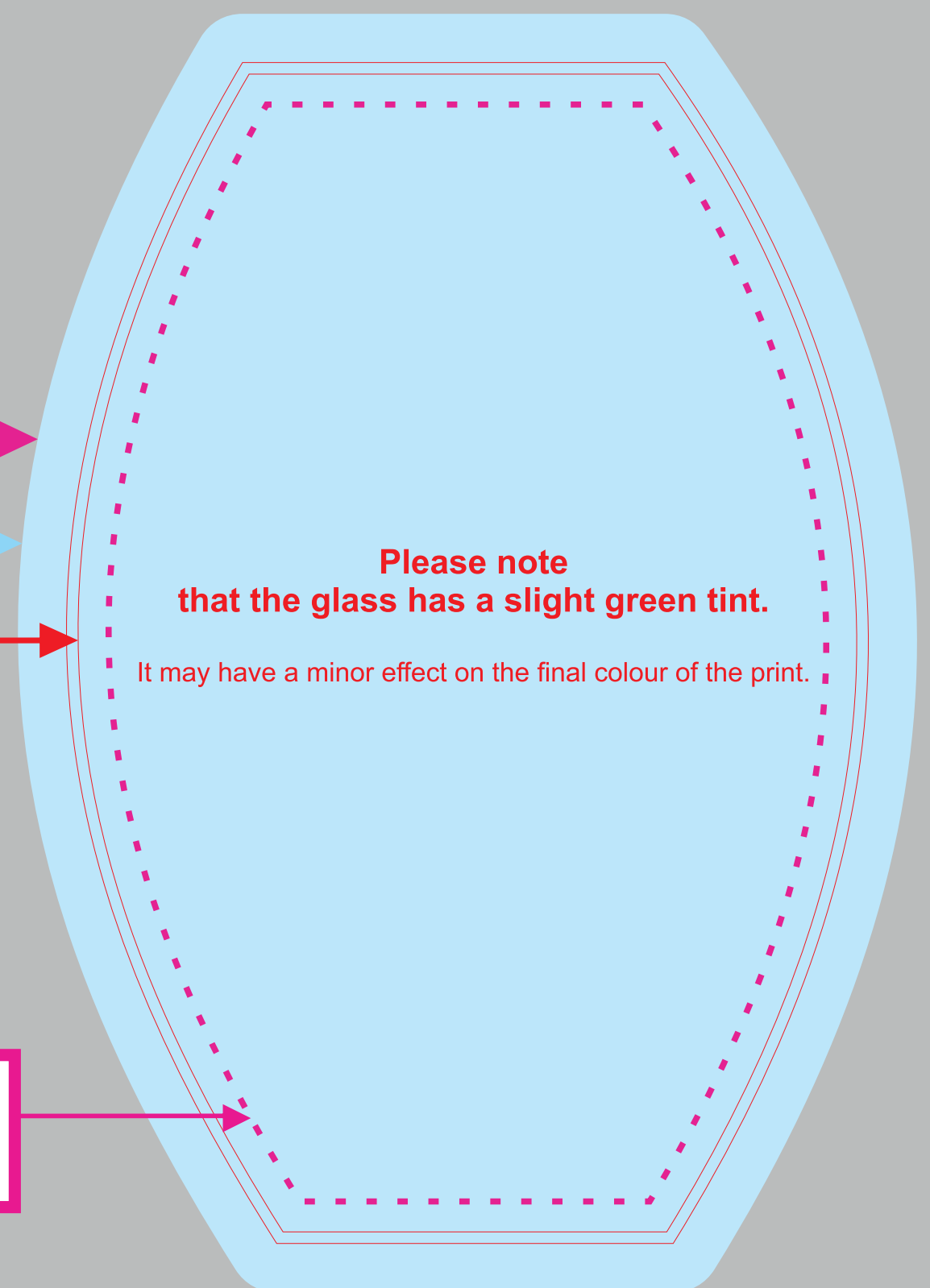
all fonts converted to curves

smallest font used 8 pt

minimum thickness of lines used in the design 0.2 mm

! Because of manual processing of the glass trophies, template may slightly differ from the final product.

an area where essential elements should be placed, i.e. text, logo, etc.



G043

Prosimy nie usuwać szarego tła

ENGRAVING

Tips when preparing the artwork by yourself

external outline of the glass - TEMPLATE please do not change the color and thickness of the line

all fonts converted to curves

smallest font used 8 pt

minimum thickness of lines used in the design 0.2 mm

laser engraving area

we only use vector objects (inscriptions, logos, characters)

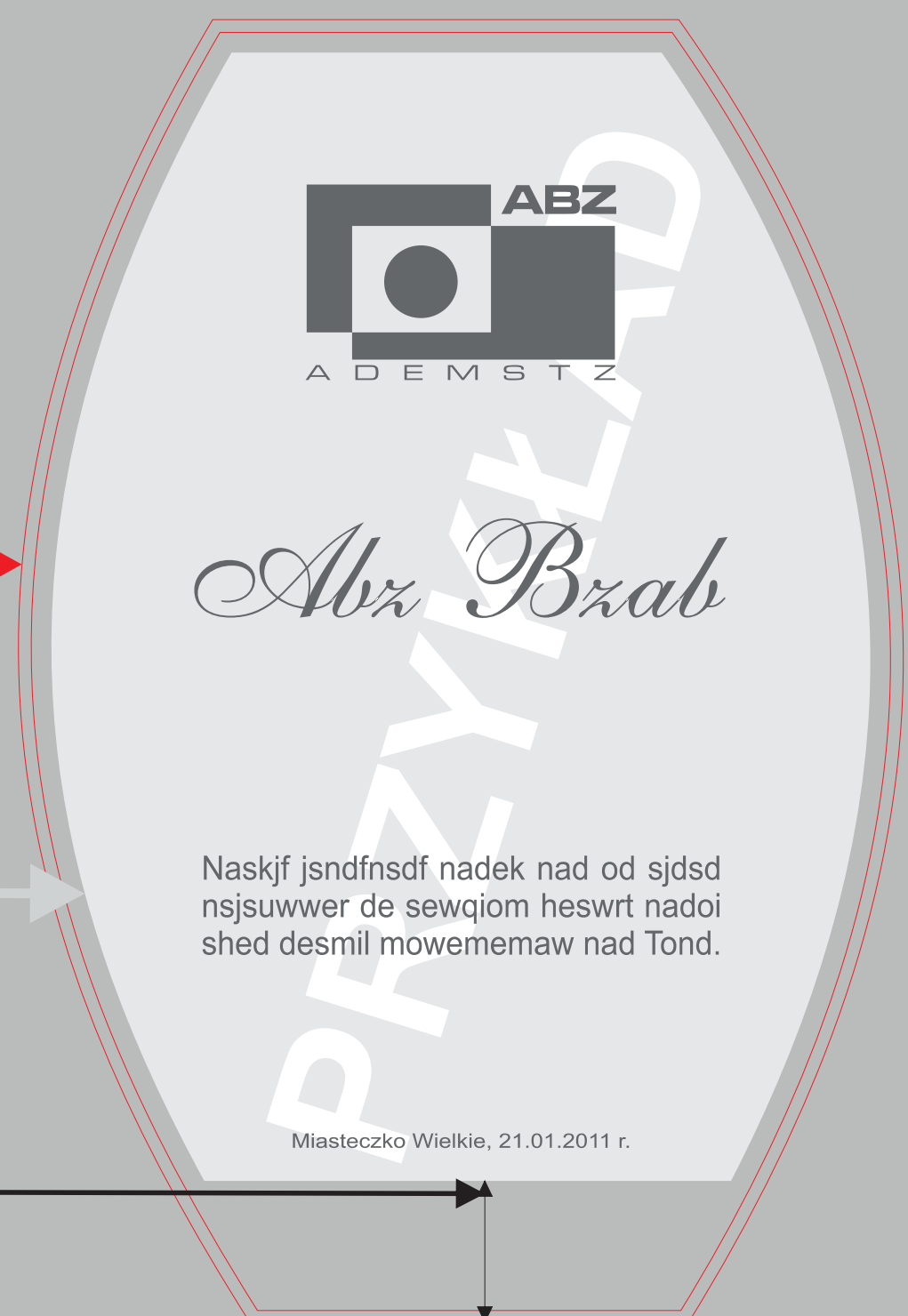
the pattern for engraving will be prepared in grey using 70 % black in C M Y K scale

when filling with paint, please specify colour (paint palette in separate file)

distance of the lowest inscription from the base 20 mm

ENGRAVING

! Because of manual processing of the glass trophies, template may slightly differ from the final product.



G043